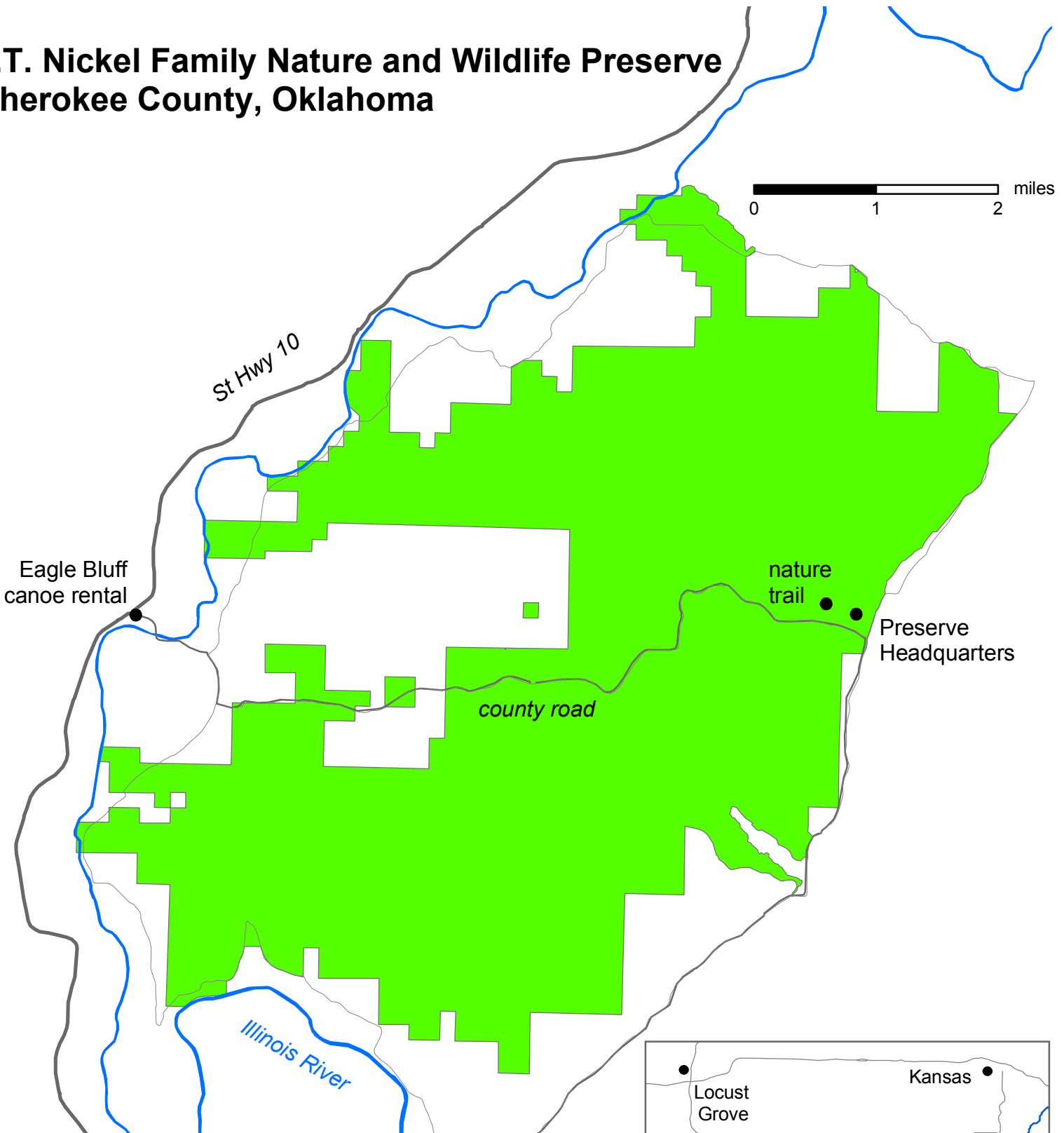


J.T. Nickel Family Nature and Wildlife Preserve Cherokee County, Oklahoma



Directions to the Preserve, from Tahlequah:
From the intersection of Hwys 82 and 51, follow Highway 51 east about 2 miles to Highway 10 (Scenic 10). Turn north on Highway 10 and go 10 miles to Eagle Bluff canoe rental. Turn right on the gravel road just past the big sign for Eagle Bluff. Cross the bridge over the river, go a half mile and stay to the right at the split in the road. Proceed about ¼ mile and turn left. Follow the county road east to cross through the preserve (about 6 miles to the Preserve Headquarters on the left.)

