

KEYSTONE LAKE

LOCATION OF DAM—Keystone Dam is in the Arkansas River Basin on the Arkansas River at mile 538.8, Lat. 36°09'05", Long. 96°15'05" in Sec. 4, T19N, R10E in Tulsa County 8.5 miles west of Sand Springs and about 15 miles west of Tulsa.

CONSTRUCTION STATUS—Constructed by Corps of Engineers—Construction started January 1957 and the project was placed in flood control operation in September 1964. No. 2 generating unit became operational on May 2, 1968, and No. 1 generating unit became operational on May 21, 1968, each having a 35,000 kilowatt generating capacity. Initial cost of the project was \$122,716,000.

PURPOSE/AUTHORIZATION—Flood control, water supply, hydroelectric power, navigation and fish and wildlife. Authorized by the Flood Control Act approved May 17, 1950. Project Document SD 107, 81st Congress, First Session.

STRUCTURE DATA—The dam is a rolled earthfill structure with a total length of 4,600 feet, including a 1,600-foot concrete section. The maximum height above the streambed is about 121 feet. The controlled spillway is 720 feet wide and consists of eighteen 40 × 35-foot gates. The capacity at the top of the maximum pool is 939,000 cfs.

SHORELINE LENGTH—330 miles

DRAINAGE AREA—74,506 square miles

DEPTH—Mean 23.75 ft., Max. 73 ft. Based on normal pool elevation.

LAKE DATA—

	Elevation (NGVD)	Area (Acres)	Capacity (Acre-Feet)
Flood pool	754.0	54,320	1,737,600
Normal pool	723.0	23,610	557,600

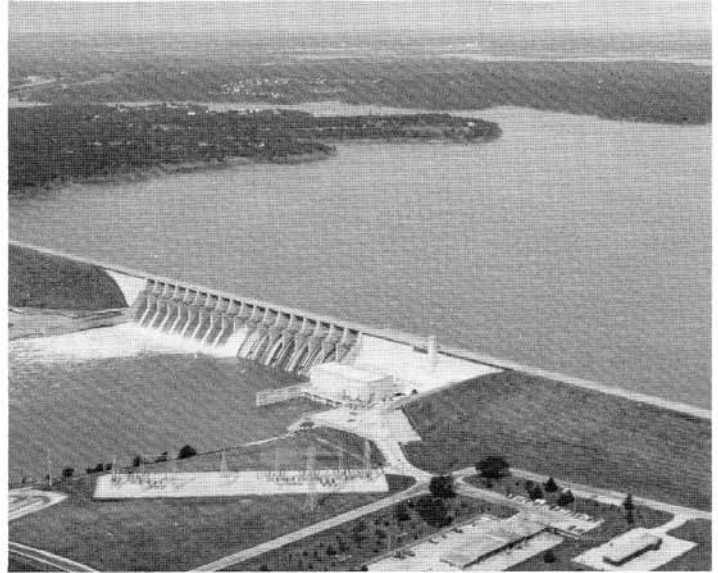
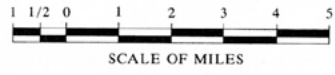
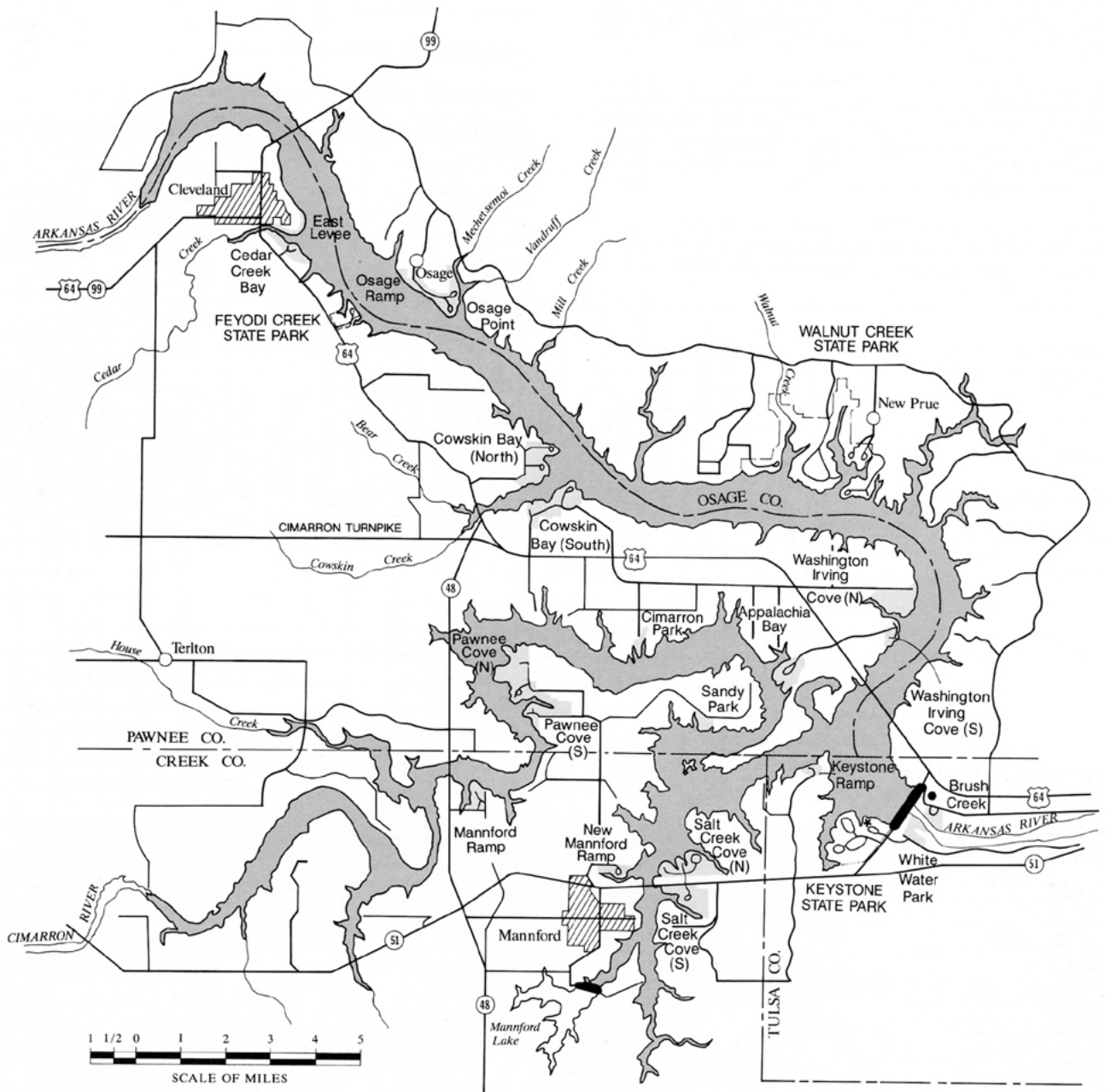


Photo Courtesy CORPS OF ENGINEERS

RECREATIONAL AREAS	FACILITIES																			
	Boat Ramp	Picnic Area	Designated Campsites	Drinking Water	Group Shelter	Restrooms	Showers	Swimming Beach	Change House	Trailer Dump Station	Electric Outlets	Concession Services	Playground	Nature Trail	Marina	Golf Course	Cabins	Enclosed Fishing Dock	Boat Rentals	Swimming Pool
Appalachia Bay	●	●	●	●		●														
Brush Creek		●		●		●														
Cedar Creek Bay	●	●		●		●														
Cimarron Park			●			●														
Cowskin Bay (N)	●	●	●	●		●														
Cowskin Bay (S)	●	●	●	●		●		●				●								
East Levee	●																			
Feyodi State Park	●	●	●	●		●	●	●		●	●									
Keystone State Park ¹	●	●	●	●		●	●		●	●	●	●	●		●		●			
Keystone Ramp ²	●	●	●			●		●	●										●	
Mannford Ramp	●	●	●	●		●														
New Mannford Ramp	●	●	●	●		●														
Osage Point	●	●	●	●	●	●	●	●	●											
Osage Ramp	●	●	●	●		●														
Pawnee Cove (N)	●	●	●	●		●														
Pawnee Cove (S)	●	●	●	●	●	●	●													
Salt Creek Cove (N)	●	●	●	●	●	●	●	●	●	●	●		●							
Salt Creek Cove (S)												●								
Sandy Park		●	●			●														
Walnut Creek State Park	●	●	●	●		●		●				●	●							
Washington Irving Cove (N)	●	●	●	●		●		●												
Washington Irving Cove (S)	●	●	●	●		●	●	●	●	●	●			●						
White Water Park		●				●														

ADDITIONAL FACILITIES: ¹Fitness trail; ²Equestrian trails



LEGEND

	U.S. Highway		Interstate Highway
	State Highway		Paved Road
	Secondary or Public Use Area Road		Overlook
	Recreation Area		Project Office
	State or National Park Boundary		
	City with population less than 1000		
	City with population greater than 1000		

